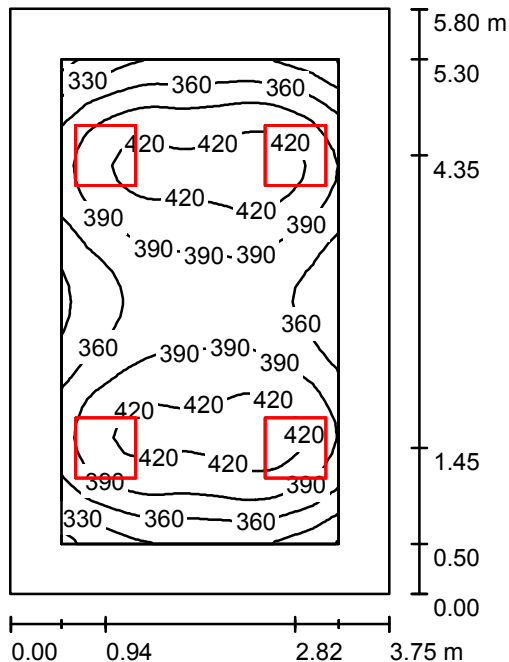


Operator  
Telephone  
Fax  
e-Mail

### 3.04 / Summary



Height of Room: 2.940 m, Mounting Height: 2.940 m, Maintenance factor: 0.90

Values in Lux, Scale 1:75

Surface	$\rho$ [%]	$E_{av}$ [lx]	$E_{min}$ [lx]	$E_{max}$ [lx]	$u_0$
Workplane	/	387	294	441	0.759
Floor	20	284	187	341	0.659
Ceiling	70	84	57	99	0.682
Walls (4)	50	194	69	417	/

#### Workplane:

Height: 0.800 m  
Grid: 32 x 32 Points  
Boundary Zone: 0.500 m

Illuminance Quotient (according to LG7): Walls / Working Plane: 0.540, Ceiling / Working Plane: 0.216.  
Proportion of points with less than 400 lx (for IEQ-7): 63.18%.

#### Luminaire Parts List

No.	Pieces	Designation (Correction Factor)	$\Phi$ (Luminaire) [lm]	$\Phi$ (Lamps) [lm]	P [W]
1	4	OCTA-LIGHT PLC OCTL-OLS-30-RNWR (1.000)	3040	3100	28.0
Total:			12160	12400	112.0

Specific connected load:  $5.15 \text{ W/m}^2 = 1.33 \text{ W/m}^2/100 \text{ lx}$  (Ground area:  $21.75 \text{ m}^2$ )